



**REXAM**  
FROM CONCEPT TO CREATION

**NEW  
COLLECTION**

**PRODUCT  
CATALOUGE  
2026**

[WWW.REXAMGROUP.COM](http://WWW.REXAMGROUP.COM)



[01014074000](tel:01014074000)



EITahra Mall, Street 34, 1<sup>st</sup> District, Elsheikh Zayed, GIZA

# CONTENTS

OUR PARTNERS

MAGNETIC UNITS

CYLINDER COLLECTION

TRACKS LIGHTING & INSTALLATION

LINEAR TRACKS

TRACK PROJECTOR

CONTACT

# OUR PARTNERS

**Panasonic**

**Schneider**  
Electric

**OSRAM**

**ELSEWEDY**  
**ELECTRIC**

**SIEMENS**

**ABB**

**PHILIPS**

**TOSHIBA**

**3B**  
**3BROTHERS**  
BIG, BRILLIANT, BRIGHT

**BRIDGELUX**  
The Magic of Light™

**iLOCK**

**elios**

**LIFUD**  
LED Driver

**EGY**  
**LUX**

**DURA.Light**  
MODERN DECORATION LIGHTING

**Golden Light**  
For Electrical Supplies

**SONOFF**

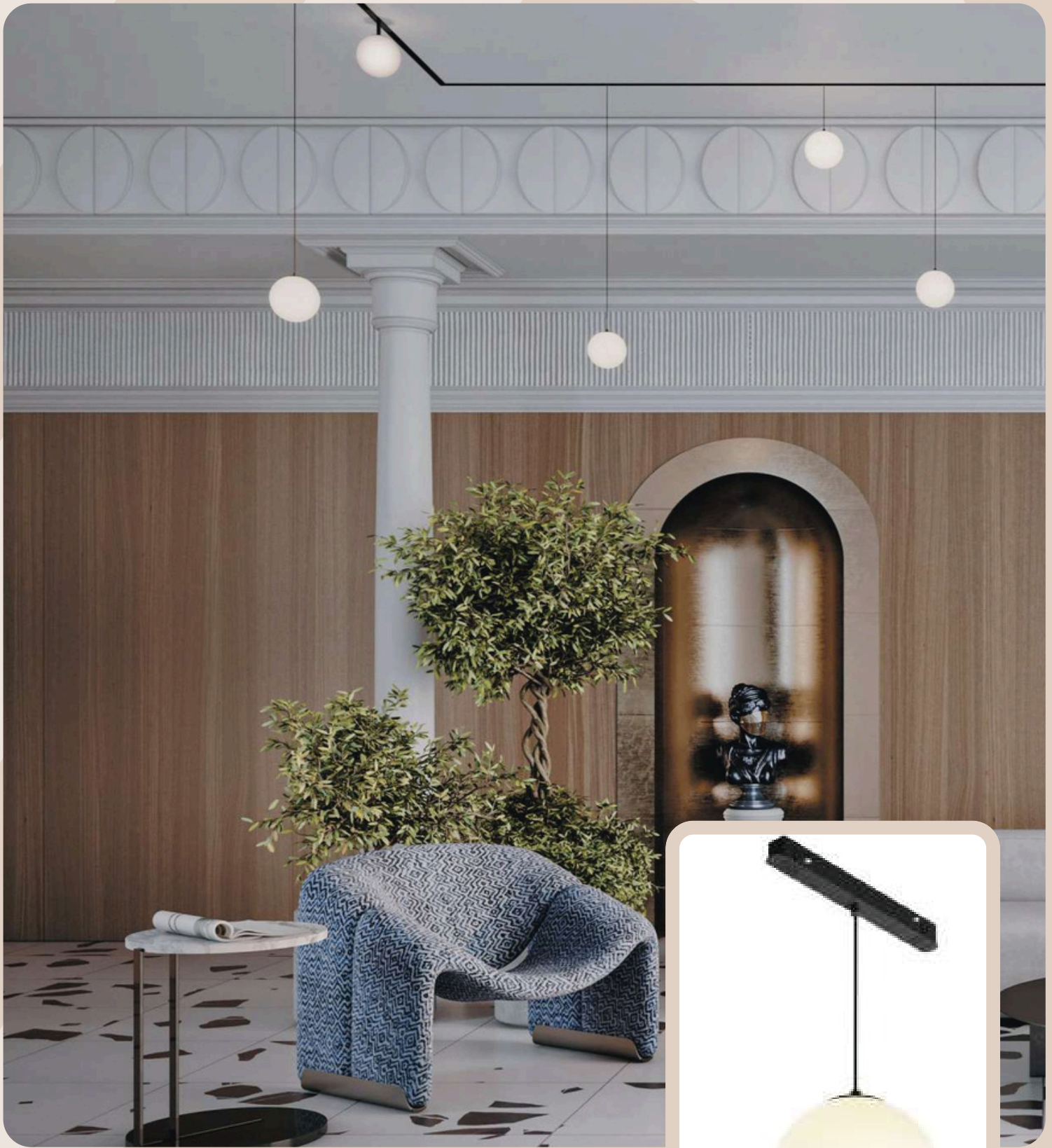
**ELSEWEDY**  
**CABLES**

# MAGNETIC UNITS



**Lunar**  
**Tarvi**  
**M-Tube**

# Lunar



[01014074000](tel:01014074000)



EITahra Mall, Street 34, 1<sup>st</sup> District, Elsheikh Zayed, GIZA

# Tarvi

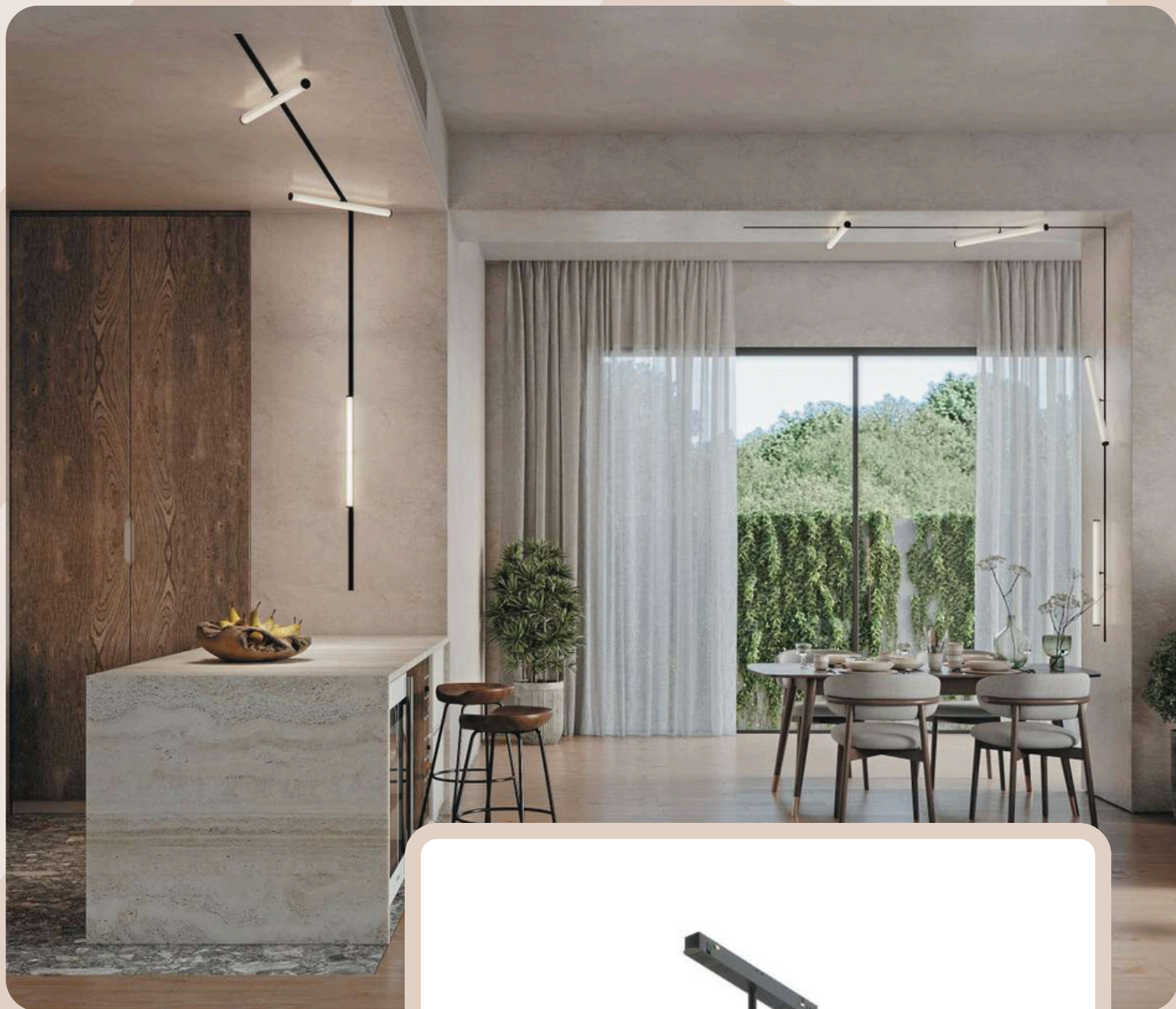


[01014074000](tel:01014074000)



EITahra Mall, Street 34, 1<sup>st</sup> District, Elsheikh Zayed, GIZA

# M-Tube



[01014074000](tel:01014074000)



EITahra Mall, Street 34, 1<sup>st</sup> District, Elsheikh Zayed, GIZA

# CYLINDER COLLECTION



**Black & White**  
**Fixed & Adjustable**  
**Multi-Length**

**cylinder**  
COLLECTION



**Recessed**  
**3000k**  
**COB-Bridgelux**  
**P3005**

**BRIDGELUX**  
The Magic of Light™



**cylinder**  
COLLECTION

**Surface**  
**3000k**  
**COB-Bridgelux**  
**P3006**

**BRIDGELUX**  
The Magic of Light™

**Future**  
Lighting

cylinder  
COLLECTION



**Recessed**  
**3000k**  
**COB-Bridgelux**  
**P3007**

**BRIDGELUX**  
The Magic of Light™



cylinder  
COLLECTION



**Recessed**

**3000k**

**COB-Bridgelux**

**P3008**

**BRIDGELUX**  
The Magic of Light™



# cylinder COLLECTION



**Surface**  
**3000K**  
**COB-Bridgelux**  
**P3009**

**BRIDGELUX**  
The Magic of Light™

**Future**  
Lighting

cylinder  
COLLECTION



**Surface**  
**3000k**  
**COB-Bridgelux**  
**P3010**



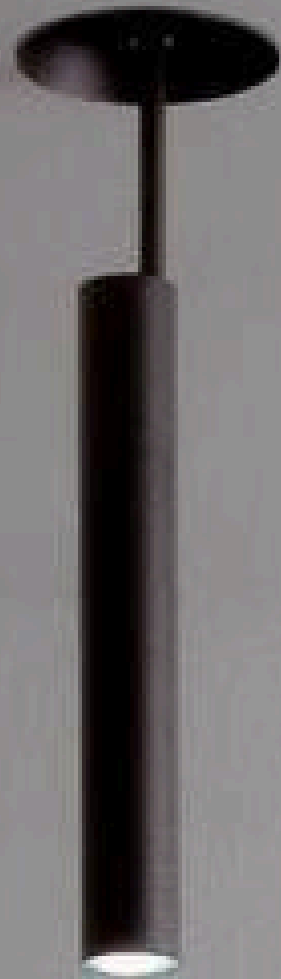
**BRIDGELUX**  
The Magic of Light™



**cylinder**  
COLLECTION



**Recessed**  
**3000k**  
**COB-Bridgelux**  
**P3011**



# cylinder COLLECTION



**Recessed**

**3000k**

**COB-Bridgelux**

**P3012**

**BRIDGELUX**  
The Magic of Light

**Future  
Lighting**

cylinder  
COLLECTION



**Surface**

**3000k**

**COB-BRidgelux**

**P3014**

**BRIDGELUX**  
The Magic of Light™

**Future  
Lighting**

cylinder  
COLLECTION

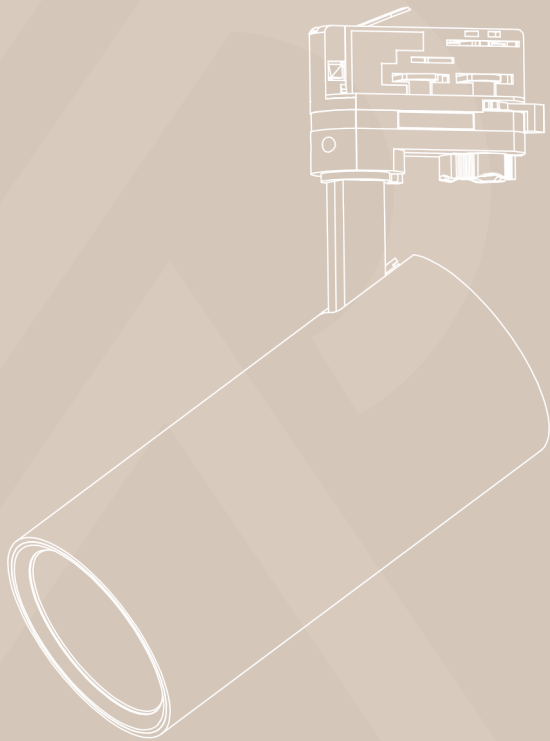


**Recessed**  
**3000k**  
**COB-Bridgelux**  
**P3013**

  
**BRIDGELUX**  
The Magic of Light™



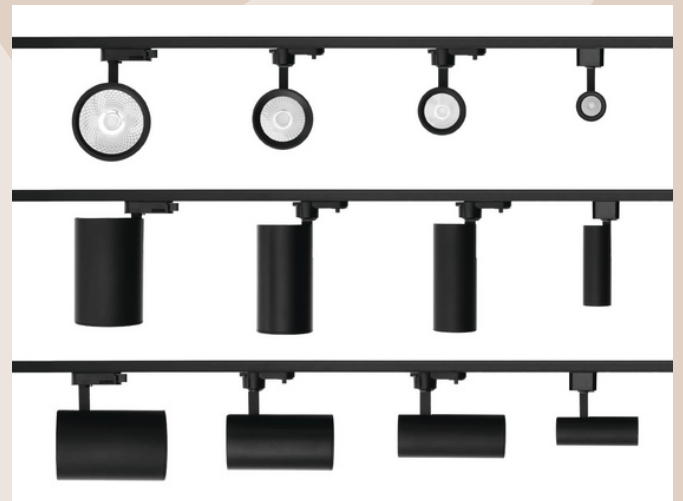
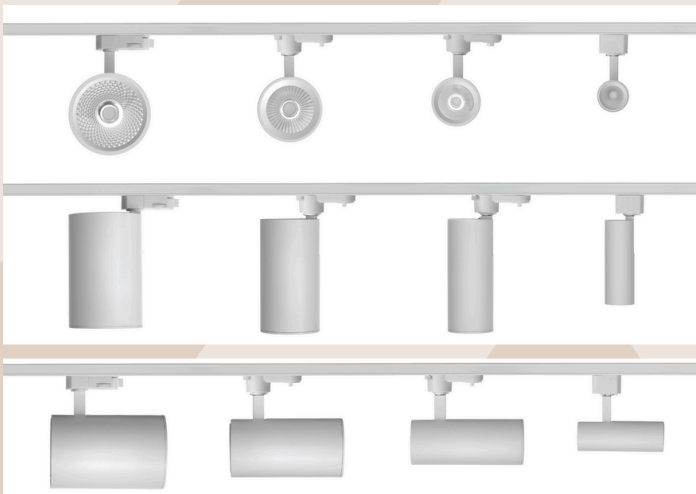
# TRACK LIGHTING



**MULTI COLOR**  
**MULTI KELVIN**  
**MULTI LENGTH**  
**AVAILABLE IN STOCK**

# track LIGHTING

- Track lighting is suitable for a range of commercial and residential applications.
- The major appeal of track lighting is its versatility and adaptability.
- The tracks comes in various lengths which can be connected and configured to suit any space.
- Once the light heads are installed, they can be moved up and down the tracks and adjusted to direct the light into the desired focal point.

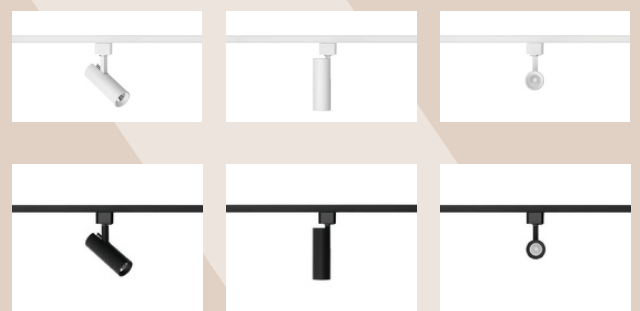


## 10W TRACK LIGHTS

The compact design of our 10W track light fittings are suitable for residential projects with low ceilings as well as inside cupboards or display units. These pocket-sized lighting heads are perfect for areas that are not regularly occupied or require low level lighting.

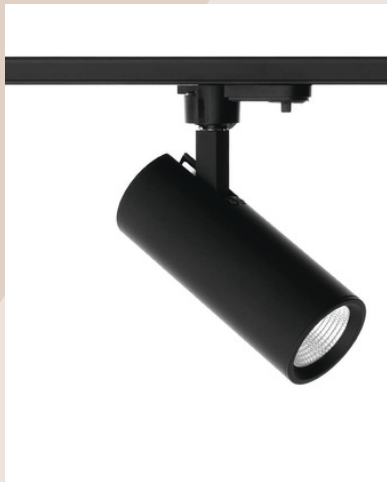
**WHITE**  
WARM WHITE  
COOL WHITE

**BLACK**  
WARM WHITE  
COOL WHITE



<b>CRI</b> 85	<b>BEAM ANGLE</b> 15° 25° 38°	<b>DIMMING OPTIONS</b> On request	<b>WARRANTY</b> 3 Year Warranty
<b>COLOURS</b> Black or White	<b>TRACK TYPE</b> 2 phase	<b>LUMEN OUTPUT</b> 900 lumens	<b>WARM:3000K</b> <b>COOL: 4000K</b>

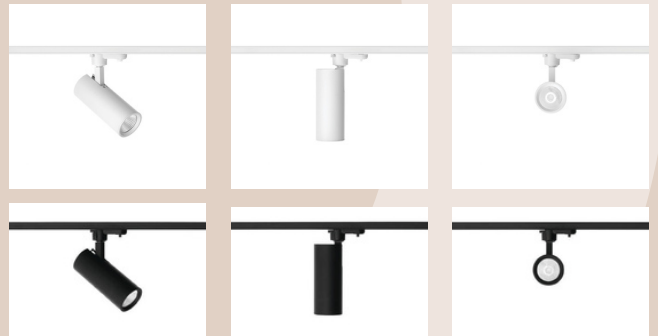
# track LIGHTING



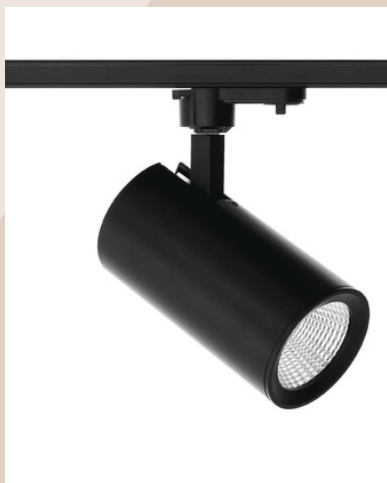
## 15W TRACK LIGHTS

Our 15W track lighting is very popular among residential and art gallery projects, particularly with ceilings below 3.2 meters high. These fittings can change the entire look and feel of a room as they are compatible with standard Clipsal dimmers. Their low power consumption makes them an energy efficient lighting solution.

<b>WHITE</b> WARM WHITE	<b>BLACK</b> WARM WHITE
COOL WHITE	COOL WHITE



CRI 85	BEAM ANGLE 15° 25° 36°	DIMMING OPTIONS On Request	WARRANTY 3 Year Warranty
COLOURS Black or White	TRACK TYPE 2 phase	LUMEN OUTPUT 1350 lumens	WARM: 3000K COOL: 4000K



## 30W TRACK LIGHTS

These commercial style light fittings are suitable for retail stores, showrooms and office spaces with ceiling heights 3.2 meters or greater. As a general guide, the greater the distance between the fixture and floor level, the greater the wattage required to light the space.

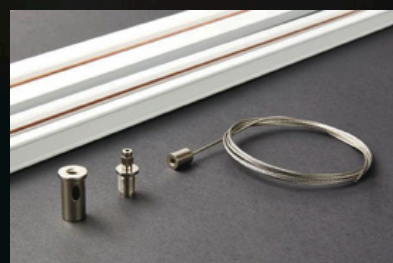
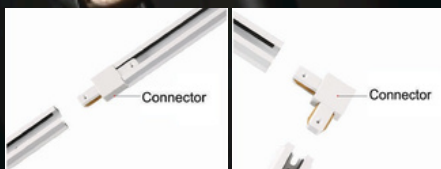
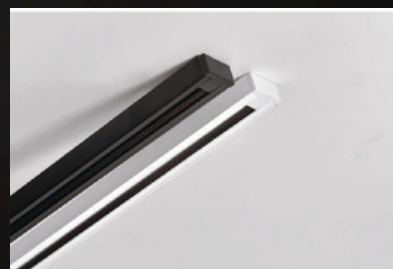
<b>WHITE</b> WARM WHITE	<b>BLACK</b> WARM WHITE
COOL WHITE	COOL WHITE



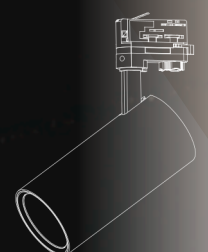
CRI 85	BEAM ANGLE 15° 25° 36°	DIMMING OPTIONS on Request	WARRANTY 3 Year Warranty
COLOURS Black or White	TRACK TYPE 2 phase	LUMEN OUTPUT 2700 lumens	WARM: 3000K COOL: 4000K

## TRACK LENGTHS

Track lighting is the most flexible lighting solution available. The tracks can be arranged into many configurations including straight runs, T shapes, U shapes, squares and rectangles. Tracks are available in 1, 2 and 3 meter lengths and can be cut to any length you desire. There are a number of mounting options available for track lighting including surface mounted. The tracks can also be suspended from the ceilings with 1.5M and 3M length adjustable hangers.



SUSPENSION KITS



# products INSTALLED



LED World track lighting has been installed in a variety of projects all throughout Egypt. From art galleries to office buildings and retail stores to residential homes track lighting is a truly versatile lighting solution. We are proud to showcase a range recent projects featuring our LED track lighting products.

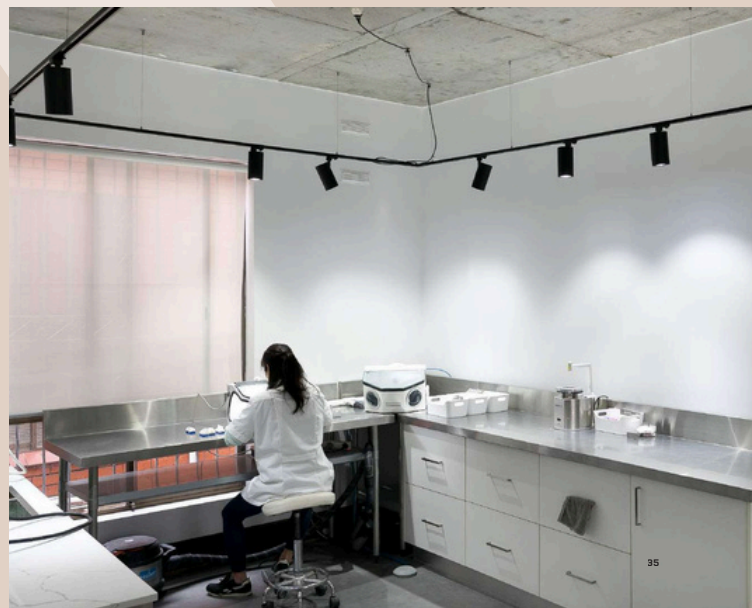
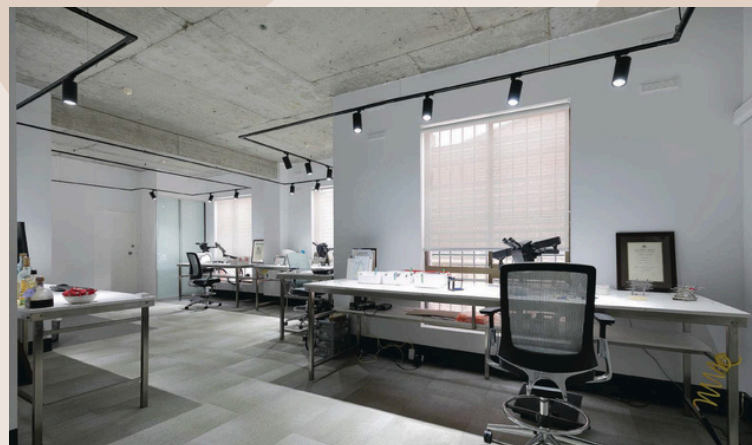


## DENTAL Clinic LIGHTING TIP

It is recommended that cool white lighting is used in all medical facility projects. Creating a work environment that enhances concentration and reduces eye strain are critical factors when specifying lighting. Generally, working environments should use the 5000K white colour temperatures.

### PRODUCT INSTALLED

30W Track Light  
Black Cool White  
(4000K) CRI: 85



01014074000



EITahra Mall, Street 34, 1<sup>st</sup> District, Elsheikh Zayed, GIZA

## ART GALLERY

### LIGHTING TIP

Art galleries are dynamic spaces with different sized artworks and a variety of surfaces that may create glare. Using the correct lenses in art spaces will allow you to adjust the shape of the light landing on the art work, the spread of the light and control glare from reflective surfaces.

#### PRODUCT INSTALLED

15W Track Light Black  
Warm White

Dimmable CRI: 90



01014074000



EITahra Mall, Street 34, 1<sup>st</sup> District, Elsheikh Zayed, GIZA

## RESIDENTIAL

### LIGHTING TIP

Open plan kitchen and living rooms should always be equipped with a dimmable fitting. These multifunctional spaces are used in a variety of ways throughout the day which require different levels of illumination to suit the activity and achieve the desired mood.

### PRODUCT INSTALLED

15W Track Light  
White Warm White  
(3000K) CRI: 95



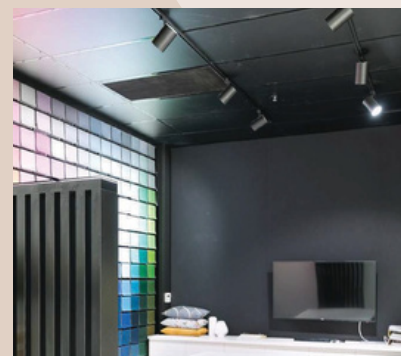
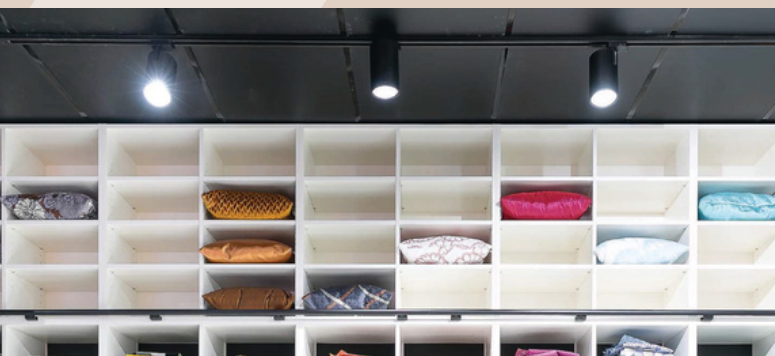
## FABRICS SHOWROOM

### LIGHTING TIP

Retail lighting enhances the customer experience and drives up sales. All retail lighting strategies should incorporate different beam angles depending on the type and location of product displays. If you wish to make a product stand out; a narrow beam angle and a brighter light output should be installed to accentuate the object. A well thought out retail lighting design will use a combination of wall wash and narrow beam angles to create a dynamic lighting design.

### PRODUCT INSTALLED

30W Track Light  
Black Cool White  
(5000K) CRI: 90



01014074000



EITahra Mall, Street 34, 1<sup>st</sup> District, Elsheikh Zayed, GIZA

## HANDBAG RETAIL STORE

### LIGHTING TIP

There is a general rule to use when specifying retail lighting. 70% of light on the product (accent lighting) and 30% for general lighting (ambience lighting). This ratio strikes the balance between focusing on products and creating a pleasant cohesive store.

### PRODUCT INSTALLED

15W Track Light  
Black Cool White  
(5000K) CRI: 90



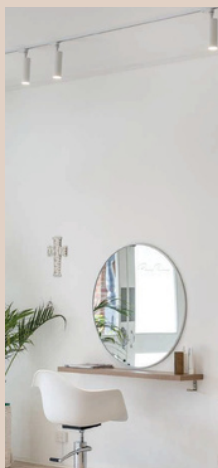
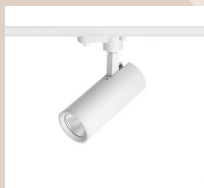
## HAIR SALON

### LIGHTING TIP

Hair salon station lighting is best implemented with two track lights at each station directed toward each side of the client's head, slightly angled towards their backs. This strategy minimises shadows across the client's face and provides uniform illumination for the station to work.

### PRODUCT INSTALLED

15W Track Light  
White Warm White  
(3000K) Dimmable CRI: 95



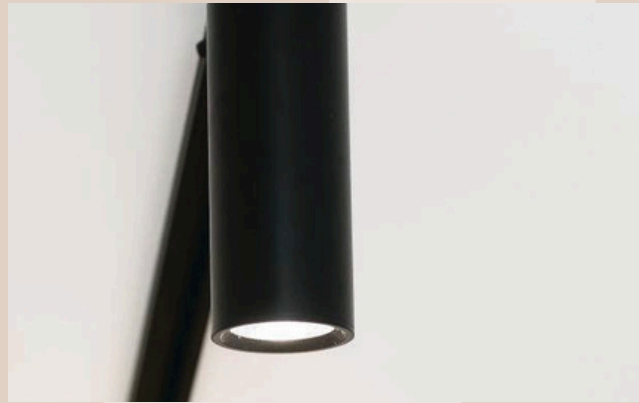
## BEACH HOUSE

### LIGHTING TIP

Kitchens are referred to as the heart of the home. They are where families congregate and come together at the end of the day. It is important to consider lighting when designing or renovating a kitchen. Using track lighting as a feature over the island bench creates interest and a focal point whilst providing effective task lighting for cooking and sharing meals.

### PRODUCT INSTALLED

15W TrackLight  
Black Warm White  
(3000K) CRI: 85



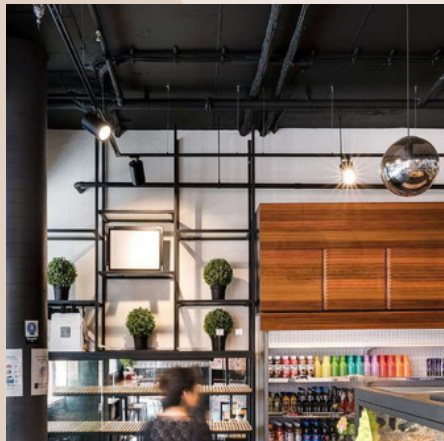
## BAKERY CAFE

### LIGHTING TIP

In projects where the ceiling or mounting height is 3.5 meters or higher, you should use 40W track lights or a luminaire with over 3000 lumens to ensure effective lighting levels at eye level.

### PRODUCT INSTALLED

30W Track Light  
Black Warm White  
(3000K) CRI: 85



01014074000



EITahra Mall, Street 34, 1<sup>st</sup> District, Elsheikh Zayed, GIZA

# Linear PROFILE

look with the ability to surface mount, recess or can be aluminium powder coated any colour required to create a truly bespoke product.

## products INSTALLED



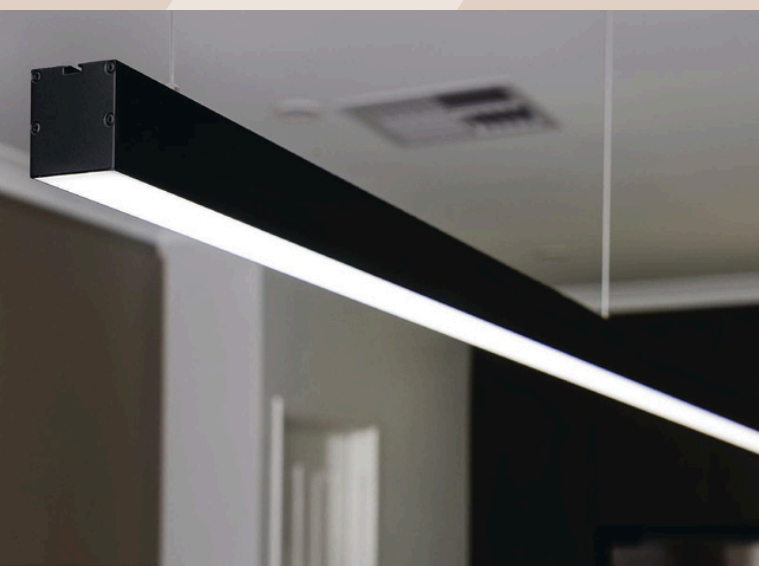
### RESIDENTIAL KITCHEN

#### LIGHTING TIP

When choosing linear profiles for your island benches or tables, it is suggested that they measure less than the length of the furniture. For instance, a 3 meter long pendant is sufficient for a 4 meter bench. As LED World linear pendants are designed and manufactured in-house, all fittings can be customised for any project.

#### PRODUCT INSTALLED

90W Suspended LED Linear Light  
Black 4000K Cool White  
60/90mm Profile Size  
CRI: 85



## RESIDENTIAL KITCHEN

### LIGHTING TIP

While selecting a lighting product, it is always a best practice to consider glare or unwanted

reflections. Many fittings in the market look great but have poor glare factors. This fitting has a milk diffuser which minimizes glare and allows the fitting to have bright lumen output.

It is also important to consider the colours used in the environment. For example, white reflects light whilst darker colours absorb it.

### PRODUCT INSTALLED

90W Suspended LED Linear Light

Black 4000K Cool White

60/90mm Profile Size CRI: 85



## OFFICE LIGHTING

### LIGHTING TIP

Office spaces require a minimum LUX level on office desks, which is known as task lighting. The required LUX levels of (320) is in accordance with Australian Standards (AS/NZS 1680.2). Using specialised lighting design software, LED World can calculate how best to achieve these required levels for your project.

### PRODUCT INSTALLED

Alluminium Profile

Black 60/90mm Cool

White (4000K)

Suspended



## OFFICE LIGHTING

### LIGHTING TIP

Software programs like Dialux allow you to create lighting calculations. We take what is called an .IES file and use the software to calculate the lighting levels known as LUX. For example all commercial spaces are required to provide a recommended level of LUX which enables the desired task to be performed.

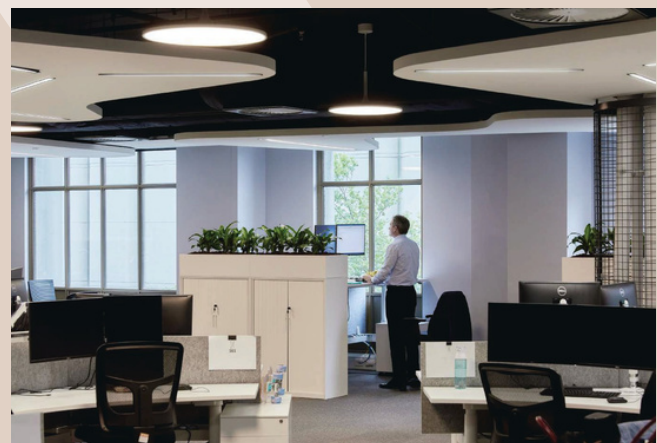
### PRODUCT INSTALLED

30W Recessed Linear Profiles

Black

4000K

CRI: 85



# Linear

## WOODEN COLOR



## SHOP CAFE or KITCHEN

### LIGHTING TIP

Warm White Light (3000K) is used to build comfort and create a relaxed atmosphere. Using suspended linear pendants over dining spaces not only removes shadows it also highlights the food and creates a cozy dining experience.

### PRODUCT INSTALLED

Linear WoodenColorPendants  
Warm White (3000K) 120  
Degree Beam Angle  
Suspended



01014074000



EITahra Mall, Street 34, 1<sup>st</sup> District, Elsheikh Zayed, GIZA

# TRACK PROJECTOR



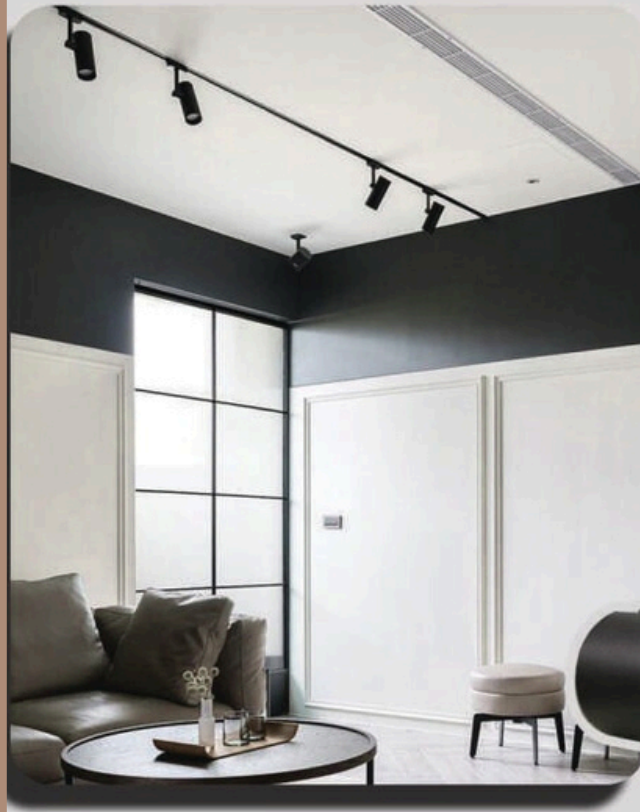
**Stock Available**  
**3000k-4000k**  
**3 years warranty**



The Magic of Light®

# I TRACK PROJECTOR

## 30W



## 50W



# I TRACK PROJECTOR

## 40W I



## I 30W



# I TRACK PROJECTOR

## 30W I



## I 50W



# I TRACK PROJECTOR

**40W** |



| **10W**



# I TRACK PROJECTOR

## 35W I



## I 35W



# I TRACK PROJECTOR

## 10w |



## | 30w



# I TRACK PROJECTOR

## 35W I



## I 30W



# I TRACK PROJECTOR

## 20W I



## I 20W



# I TRACK PROJECTOR

## Multi Wattage



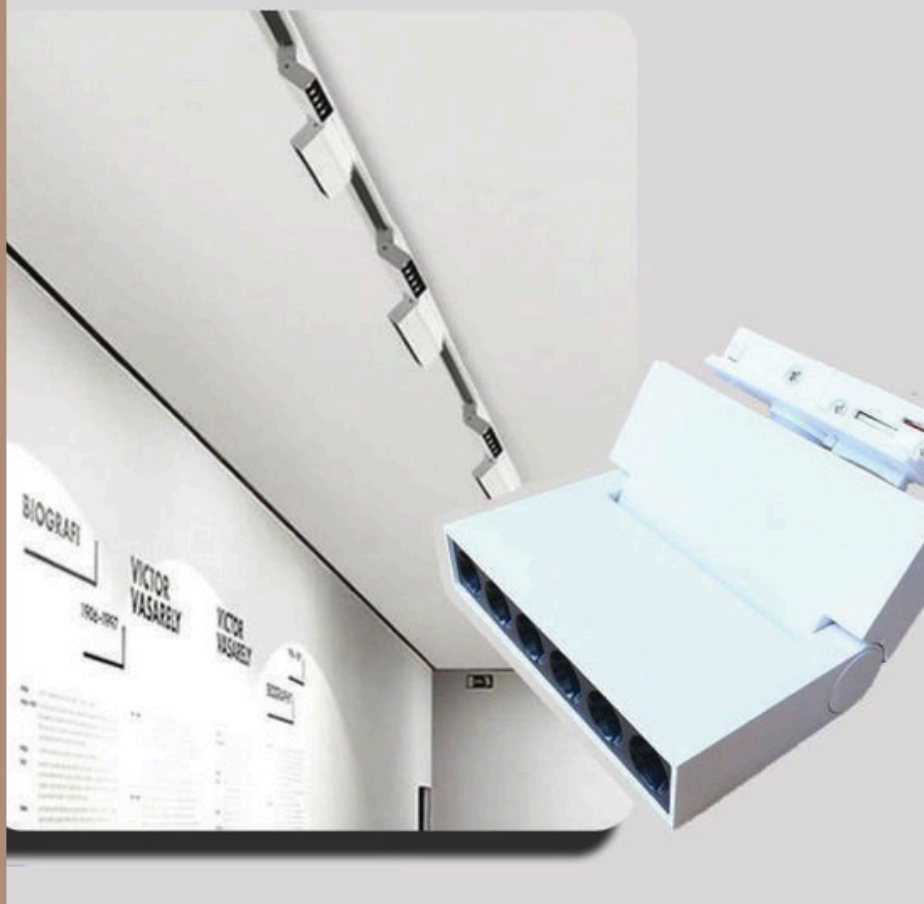
## Multi Wattage

# I TRACK PROJECTOR

## Multi Wattage



## Multi Wattage



# THANK YOU

We are ready to assist you



El-Tahra Mall, Street 34, 1st District , Zayed



01014074000



info@rexamgroup.com